



## Information Package

### Annual Event 2008

**19<sup>th</sup> September 2008**  
**Krakow Convention Centre, Krakow (Poland)**

#### Arrival in Krakow

##### **1. Krakow Airport – John Paul II International Airport (KRK) / Kraków-Balice**

Is situated 11km west of Krakow. Getting to the city is easy:

- **BUS**

MKS provides a frequent bus service from the airport to the city centre. The bus stop is just to the right on exiting the airport and tickets are available either from the ticket machine (2.50 PLN) next to the information point in the passenger terminal or on board (3 PLN). Be aware that if you have any baggage larger than a rucksack, you'll be expected to purchase an additional ticket for this. Stamp tickets immediately after boarding to avoid fines.

- **TRAIN**

A recently opened service connecting the main rail station, Dworec Główny, with Krakow airport runs approximately every half hour from 4am until midnight. Tickets are available on board for 6 PLN (£1.50, 2 Euros). The platform is approximately 200 metres from the passenger terminal though a free shuttle bus is on hand. Journey time is approx. 15 minutes.

##### **2. Katowice / Krakow airport**

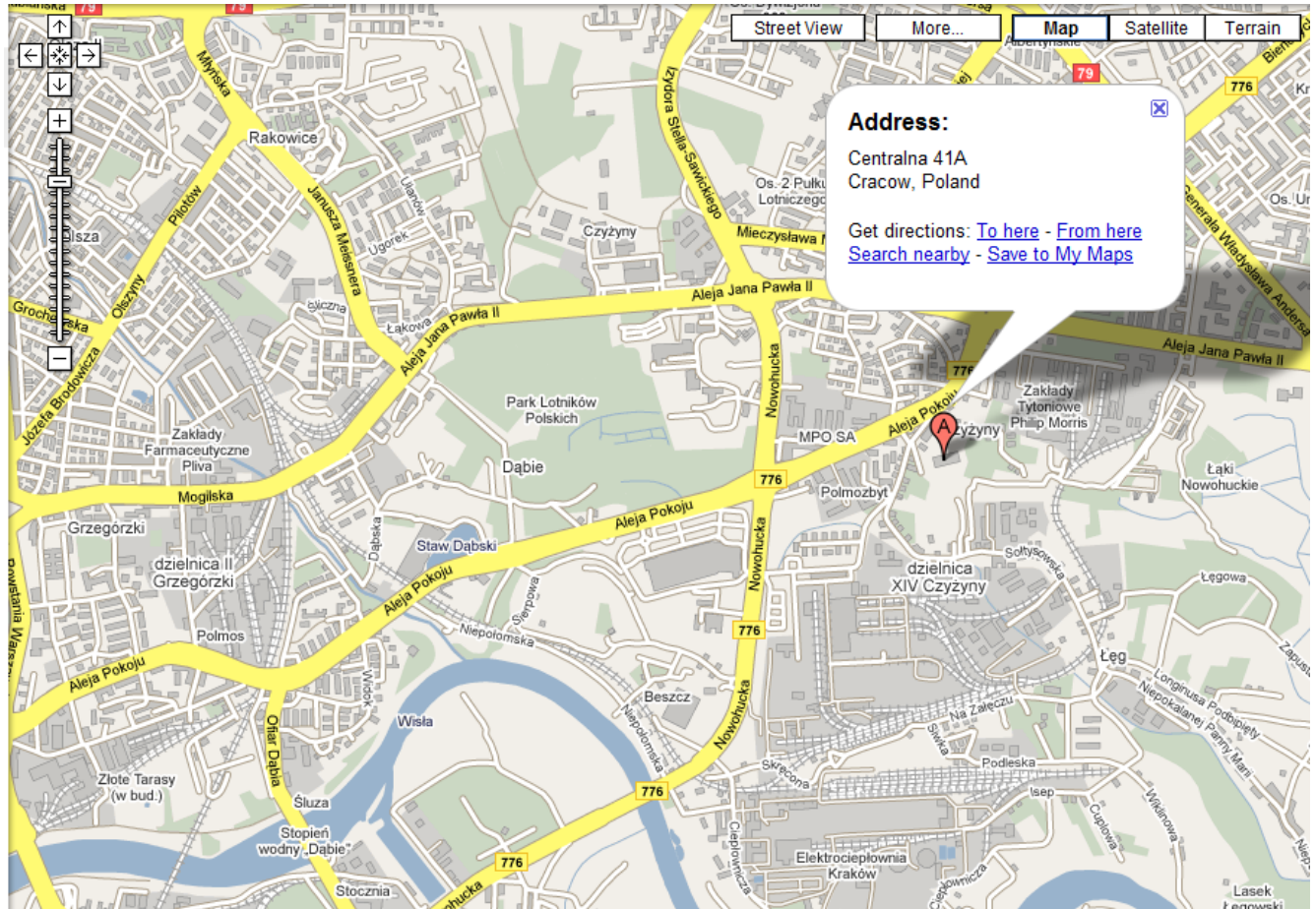
Katowice International Airport is situated 30 kilometres north of Katowice and Krakow is 70 kilometers further on the motorway. We suggest you to take the bus from the airport to Krakow. Just look for the bus with the Wizz Air logo on it. Buses are scheduled to run based on Wizzair's schedule to and from the airport. Please check <http://www.matuszek.com.pl/wizz/rjp.htm> for exact times.

## Venue Information

**Venue:** Krakow Convention Centre (Targi w Krakowie, Centralna, Krakow)

**Address:** ul. Centralna 41A, 31-586 Kraków  
Phone: +48 12 644 59 32, 644 81 65  
Fax: +48 12 644 61 41

**Website:** <http://www.targi.krakow.pl/>



### **Logistics:**

The Conference and Exhibition Centre is located 4Km east from the city centre. There are tram links between the centre (main railway and bus station) and the conference site.

The public transport system in Krakow is safe, efficient and cheap, providing a network of trams and buses. Buy your tickets (2.50PLN for adults, 1.25PLN concession) from any of the little kiosks that are dotted around the town. All journeys cost the same, irrespective of distance. Go aboard the bus or tram and punch your ticket in one of the little orange boxes.

Tram stop Conference Centre: Ulica Centralna

Trams: 1, 14 and 22

## **Annual meeting**

### **Registration**

Participants will register on Friday September 19<sup>th</sup>, between 8:45 – 9:00am, in front of the AQUA-TNET Meeting Room. Directions will be provided in the Conference Centre itself.

Participants who have attended the EAS conference do not need to re-register, they just need to show their conference badge.

### **Agenda**

Agenda will be sent separately.

### **Lunch & Coffee Breaks**

During the event lunch & coffee breaks will be provided in the Conference Centre.

### **After the meeting**

There will be a Closing reception after closure of the meeting (~ 17:00hrs) to finish the AQUA-TNET2005-08 project.

## **Contact Persons**

Marieke Reuver - [marieke@aquatt.ie](mailto:marieke@aquatt.ie) (mobile: +353 85 1667185)  
Bart Van Delsen - [Bart.VanDelsen@UGent.be](mailto:Bart.VanDelsen@UGent.be) (mobile: +32 486687701)  
David Murphy - [david@aquatt.ie](mailto:david@aquatt.ie) (mobile: +353 86 8582487)

## **Miscellaneous**

### **AQUA-TNET stand**

For AQUA-TNET members visiting EAS2008: please visit the AQUA-TNET stand at EAS2008 (15-18 September). We can be found at number 59 in the main hall of the Krakow Convention Centre.

### **Dissemination Forum**

If you have any information you would like to distribute e.g. flyers, leaflets, posters, etc; please bring them along with you as there will be a dissemination table available at the Event where you will be able to leave your material.

### **Krakow**

For more information on Krakow you can visit several good websites;

<http://www.cracow-life.com/>

<http://www.cracowonline.com/>

<http://en.wikipedia.org/wiki/Krakow>

<http://www.krakow.pl/en/?chl=EN>